

Wissahickon Nature Club

www.wissahickonnatureclub.com

Announcements

This is our final meeting for the season. Our next meeting will be on September 15, 2016.

Visit our webpage

www.wissahickonnatureclub.com for information about outings and next season's meetings. Have an awesome summer.

Treasurer's Report

According to Treasurer **Dianne Machesney**

Previous balance: 1081.02

No activity

Current Balance: \$1081.02

Worth Repeating

The battle we have fought, and are still fighting for forests is a part of the eternal conflict of right and wrong.

John Muir



Summer Tanager by Chuck Tague

Wissahickon Nature Club Outings

Judy Stark, Outings Chair
412-363-0462 c 412-327-9537

starkj2@aol.com

www.wissahickonnatureclub.com

Outings are not exclusive to members. Everybody is welcome. There is no fee to attend our outings or meetings. Dress for the weather. Wear hiking shoes and a hat. Bring sun block, field guides and binoculars. Bring a lunch. Don't forget water and snacks for the trail. If you have any questions please call the trip leader.

APRIL 28, 2016



Photo by Donna Foyle

Tonight's Speaker

April 28, Thursday, 7:30 p.m. **Donna Foyle** will present **Adventures on an Alaskan Island.** The village of Gambell on St Lawrence Island is the most unique area Donna has photographed. The Yupik native Americans living there and in the other village of Savoonga speak a language understood by

Russian natives. Even during the Cold War they travelled by boat to visit their relatives in Russia. On a clear day you can see the mountains of Siberia. They hunt for walrus and seals, gather greens in the summer and supplement their income by selling their carvings made from walrus tusk ivory.

May 1, Sunday, Enlow Fork by Wheeling Creek Watershed Conservancy.

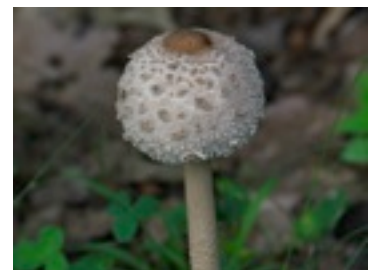
May 7, Saturday, 10:00 a.m. Raccoon Creek State Park Wildflower Reserve, by Dianne Machesney. Bring a picnic lunch.

June 3, Friday, 10:00 a.m. Buzzard Swamp, Marionville, by Bob Machesney. This will be for dragonflies and butterflies. Bring a net. Dress for ticks. 4 mile loop. Bathroom available in parking lot. No picnic tables.

June 11, Saturday, Wissahickon Annual Picnic, Mingo Creek State Park.

June 24, Friday, 10:00 a.m. Whiskerville Gamelands by Bob Machesney. This will be for dragonflies and butterflies. Bring a net. Dress for ticks. 4 mile loop. No bathrooms. Rain date will be June 26.

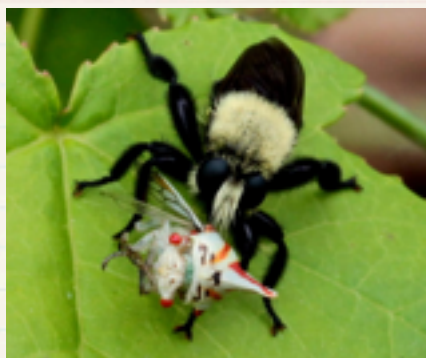
August 6, Saturday, 10:00 a.m. Jennings Prairie by Dianne Machesney.



Parasol Mushroom by Chuck Tague

APRIL 28, 2016

Celebrate Nature



Botanical Society of Western Pennsylvania

Loree Speedy 724.518.6022

loreespeedy@gmail.com

<http://www.botsocwpa.org/>

Meetings

May 9, Monday, 7:15 p.m. Christopher Tracey will discuss the issues of range edge plant species tracked by the Pennsylvania Natural Heritage Program.

June 13, Monday, 7:15 p.m. Steve McKee will present **Searching for Ferns in Zion National Park**.

Field Trips

May 21, Saturday, 10:00 a.m. Moraine State Park, 528 Trailhead, Prospect exit, by Bonnie Isaac. Walk is less than 3 miles, but includes going up and down hills. Dress for the weather and rough terrain, bring your own pack lunch, snacks, and water. Meet at the North Country/Glacial Ridge Trailhead on 528, across from upper 528 launch (no facilities).

Fern Hollow Nature Center

1901 Glen Mitchell Road

Sewickley, PA 15143

412.741.6136 **April Claus, Naturalist**

Pe-register.

<http://www.fhnc.org/>

May 14, June 4, Saturdays, 7:30 p.m. Herpetological Hotspots, Amphibians of the Night and New Wetland Grand Opening. FHNC Staff will take you to see the newly hatched salamander larvae and frog tadpoles enjoying their new home. Free. Meeting places given to those who register.

Kate St. John Outings

412.421.1566 www.birdsoutsidemymwindow.org/events/

May 22, Sunday, 8:30 a.m. Schenley Westinghouse fountain.

Three Rivers Birding Club

Bob VanNewkirk, President

412.366.1694 www.3rbc.org

Outings

April 29, Friday, 7:30 a.m. Sewickley Park by **Sheree Daugherty** in collaboration with the **Fern Hollow Nature Center**. Meet at the upper parking lot. Muddy trails. Bring water and a lunch.

May 4, Wednesday, 8:00 a.m. Linbrook Woodlands by **Karyn Delaney and Bob Van Newkirk**, Franklin Park Borough. The Woodland's features include steep wooded ravines, trails, many springs and frontage along Big Sewickley Creek. Bring a lunch, snack and water.

May 6, Friday, 7:30 a.m. Sewickley Park by **Bob VanNewkirk**. The walks begin at the upper parking lot. Muddy trails. Bring water and a lunch. Besides birding in the park we will drive and make stops along Little Sewickley Creek.

May 12, Thursday, 8 a.m. Knob Hill Community Park by **Karyn Delaney**. Meet in the second parking lot on the left on Knob Road. Wet grass and muddy trails. We'll bird until approximately noon. In case of inclement weather, walk will be rescheduled for Friday, May 13.

May 14, Saturday, 7:30 a.m. and May 15, Sunday, 8:00 a.m. Barking Slopes by **Todd Hooe**. Given the difficult terrain and sometimes narrow and undeveloped trails in parts of Barking Slopes, as well as issues of parking, two separate walks each with a maximum of 12 individuals is scheduled. One will be on May 14th and a second on May 15th. Reserve a spot by emailing Todd Hooe at hooe@verizon.net.

May 21, Saturday, 8:00 a.m. Harrison Hills by **Jim Valimont**. As you enter the park, bear right and proceed to the parking lot at the end of the road. The parking lot is near the pond. Wet grass and mud. See tinyurl.com/HarrisonHills for directions

May 21, Saturday, 8:00 a.m. Presque Isle by **Bob Van-Newkirk**. Meet at the first parking lot on the right after entering the park.

May 22, Sunday 8:00 a.m. Frick Park - Nicholson & Beechwood by **Aidan Place**. Meet at the "Blue Slide Park" entrance, corner of Beechwood Boulevard and Nicholson Street in Squirrel Hill (15217). Follow Beechwood Boulevard south from its intersection with Forbes Avenue 1.1 miles to Nicholson. You will need to park on the street

May 28, Saturday, 9:00 a.m. Bell's Tree Farm, 179 Pollock Mill Rd, Clarksville, Pa., 30 -35 mi. from Pgh. From I-79: Pa. 88 east to Jefferson, left at Pine, up the hill to Pollock's Mill Rd., right to Bell's Farm. It'll be on the left, about a mile down Pollock's Mill Rd.

Western Pennsylvania Mushroom Club

wpamushroomclub.org.

Phone Contact for Press Inquiries Only: Cecily Franklin (412) 781-6581

Walks

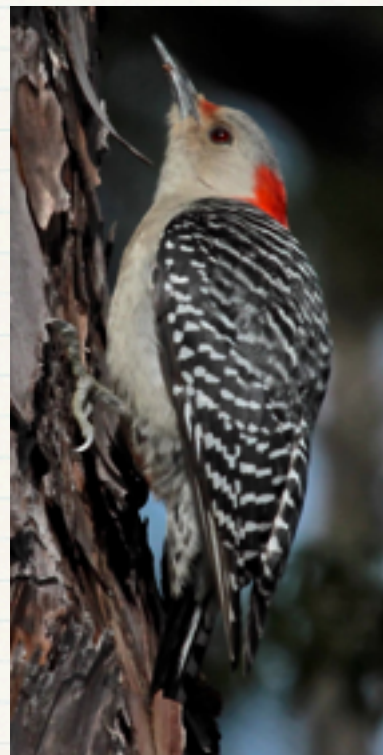
May 1, Sunday, 10:30 a.m. Ryerson Station State Park, Greene County by Park Ranger Alan Johnson and WPMC member Brian Davis.

May 7, Saturday, 10:00 a.m. Washington Park, Washington County. Meet WPMC Mycologist John Plischke III in the gravel parking area at the Walking Trail Entrance to look for morels.

May 14, Saturday, 10:00 a.m. Sycamore Island Spring Walk, Verona. Join WPMC Mycologist La Monte Yarroll and the Allegheny Land Trust for the Spring survey of Sycamore Island. Accessible only by boat; meet at the dock at 101 Arch Street in Verona.

Meeting

May 17, Tuesday, 7:00 p.m. Annual Cultivation Meeting. by **WPMC Mycologist Jim Tunney and friends**. Learn how to grow your own Oyster Mushrooms. Bring your WPMC membership card and a clean plastic shopping bag. You must be a current WPMC member to receive a mushroom kit. Meet at Beechwood Farms Nature Reserve.



Female Red-bellied Woodpecker
by Chuck Tague

***Don't forget Blackburn Road is closed.** Monica suggested: coming from the south take I-79 North. Take exit 66 for PA65 towards Emsworth/Sewickley, Old Economy Village. Keep left - follow the signs for Glenfield, Follow Deer Run Road and Merriman Road until you get to the T at Glen Mitchell Road. Make a left on Glenn Mitchell Road and then turn right into Fern Hollow Nature Center.